


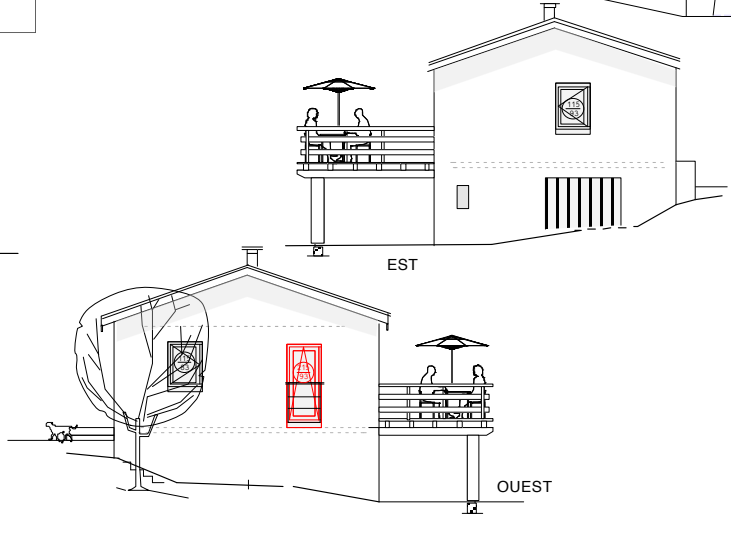
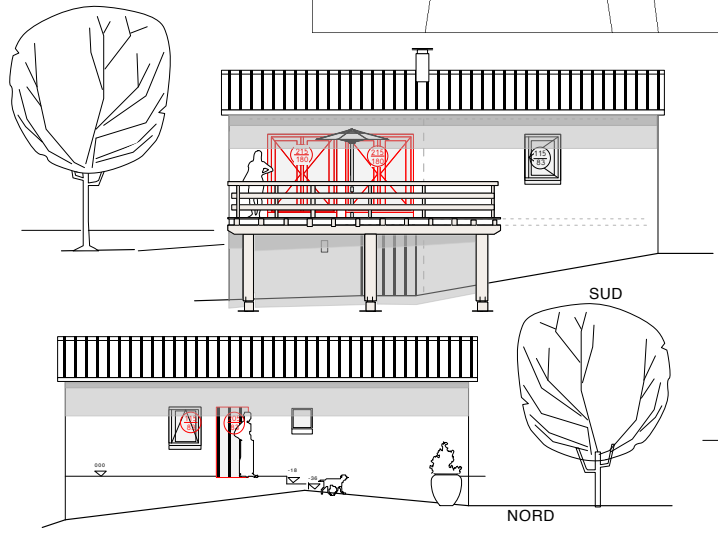
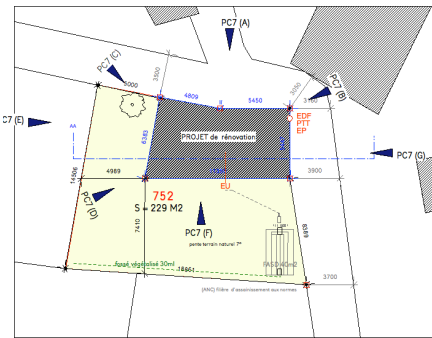
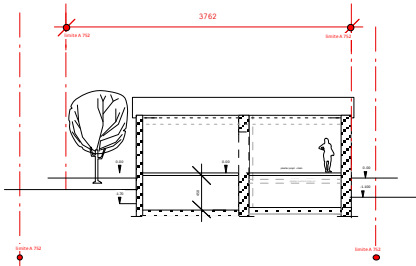
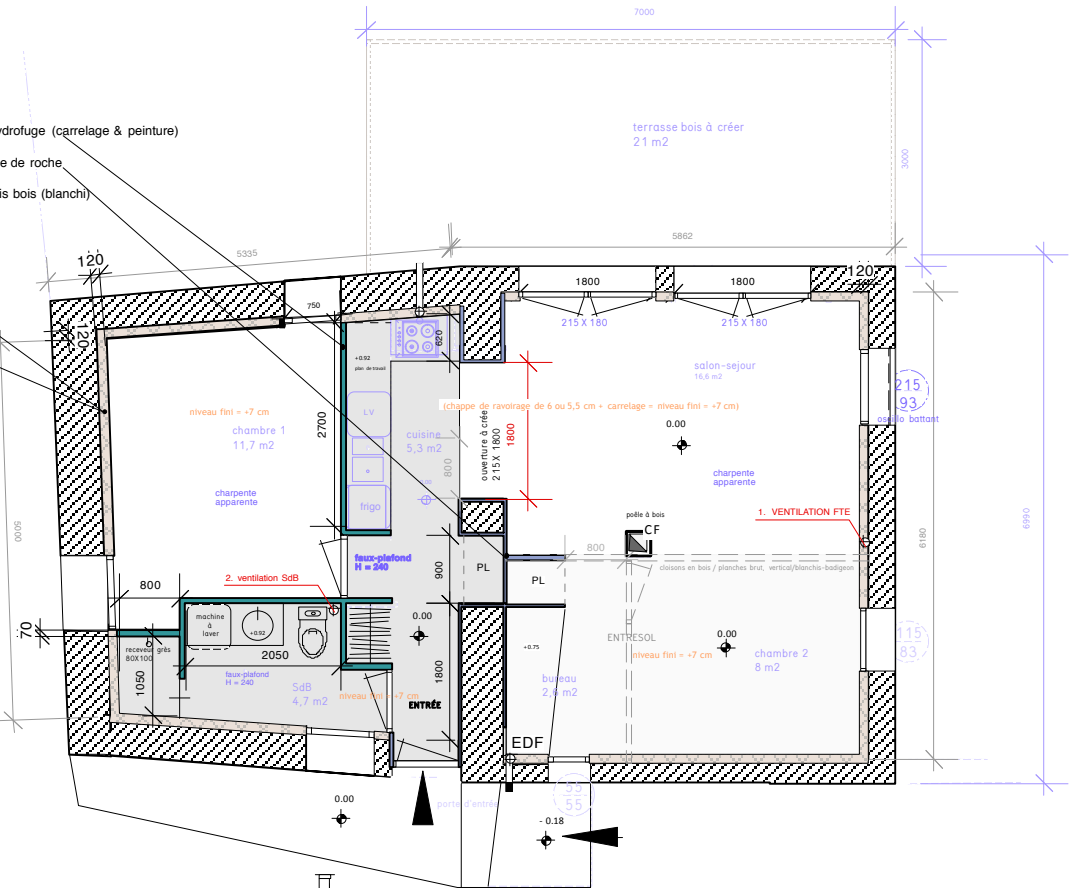


doublages:

-  béton cellulaire ou placostyl hydrofuge (carrelage & peinture)
-  oss. métall. placostyl - iso laine de roche
-  chevrons - iso cellulose - lambris bois (blanchi)



rénovation (RT 2012)
& construction d'une terrasse extérieur en bois
lieu-dit CHISAC
07270 Saint Barthélemy-Grozon

