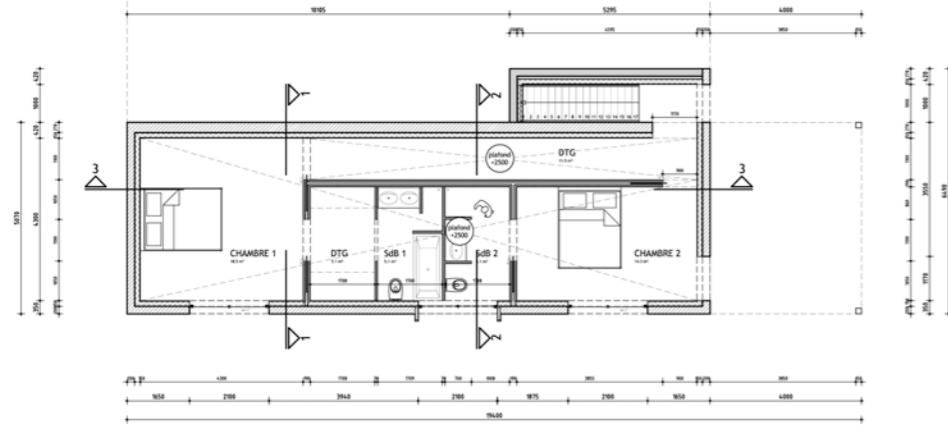
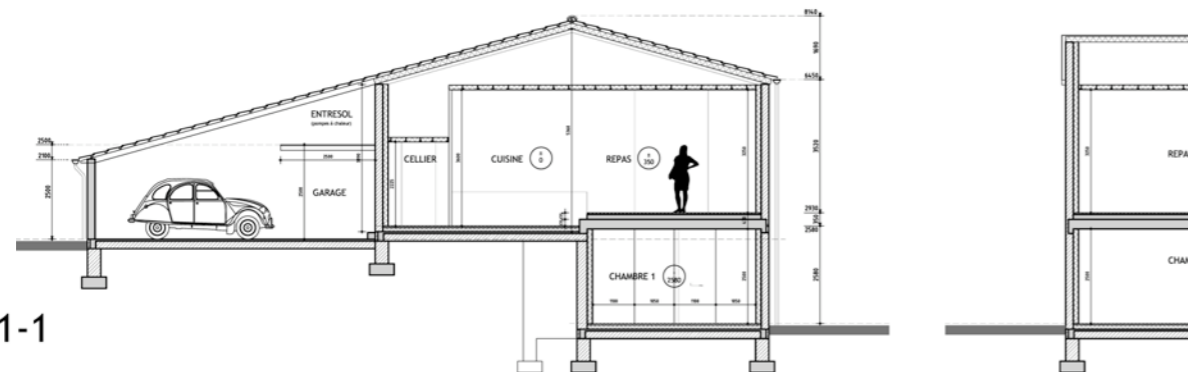


Rez de Chaussée

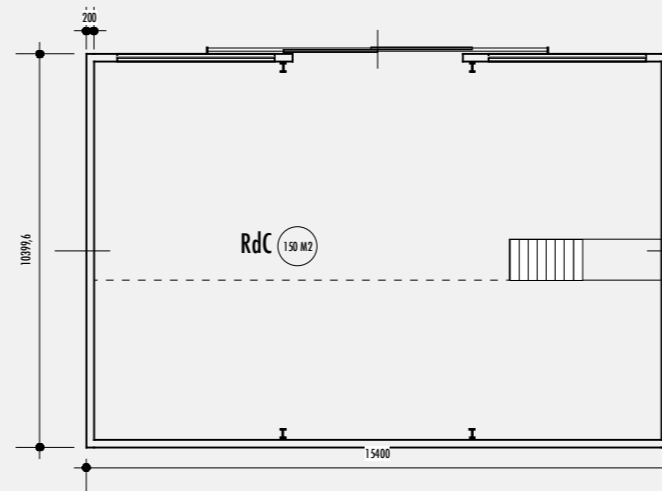
PROJET



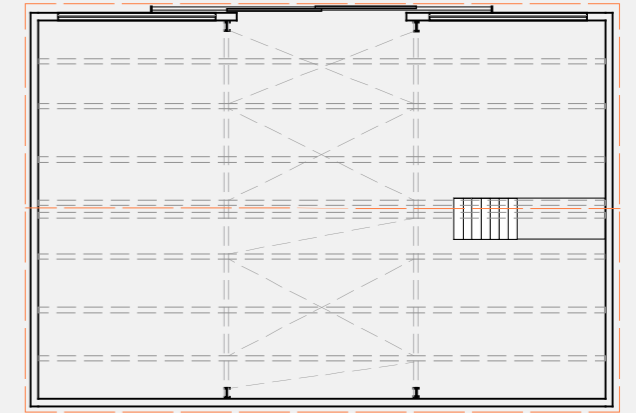
Sous-sol



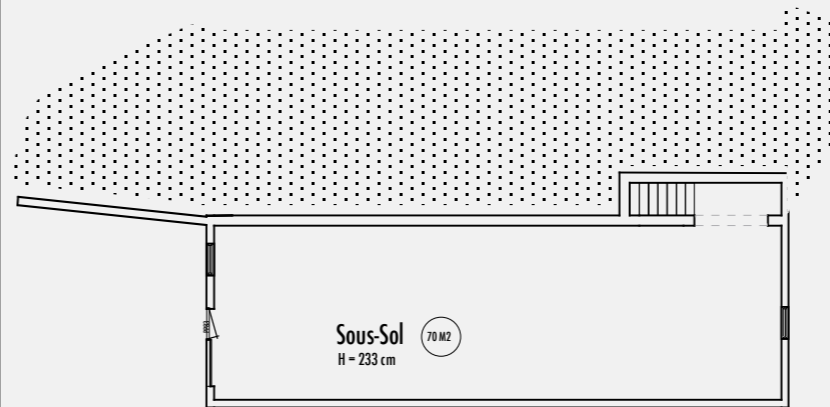
Coupe 1-1



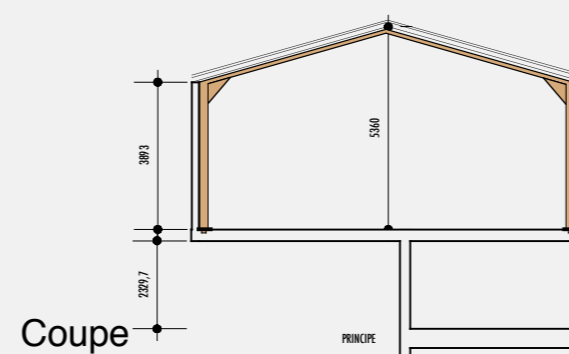
Rez de Chaussée



charpente métallique



Sous-sol



Coupe

AMÉNAGEMENT / TRANSFORMATION d'un BATIMENT AGRICOLE
en HABITATION / lieu-dit: la VIERGE - 07410 - BOZAS

PARCELLES
AO 132,134 & AO 70
SURFACE: 1066 M2

ÉTAT des LIEUX

RONALD INTHOUT_ARCHITECTE©
N° général: 71528

MALFAY - 07270 - SAINT PRIX
T/F: 0475291669

E-mail: ronald@2sources.com

1:200

12.03.2008